

INSTRUMENT APPROACH CHART - ICAO

WICK  
RNP  
RWY 13  
(ACFT CAT A,B,C)

26

21

34

097

017

22

MSA 25NM NDB(L) WCK

21

26

097

017

22

MSA 10NM NDB(L) WCK

APP 119.705

TWR 119.705

ATIS 113.600

WICK APPROACH

WICK TOWER

WICK INFORMATION

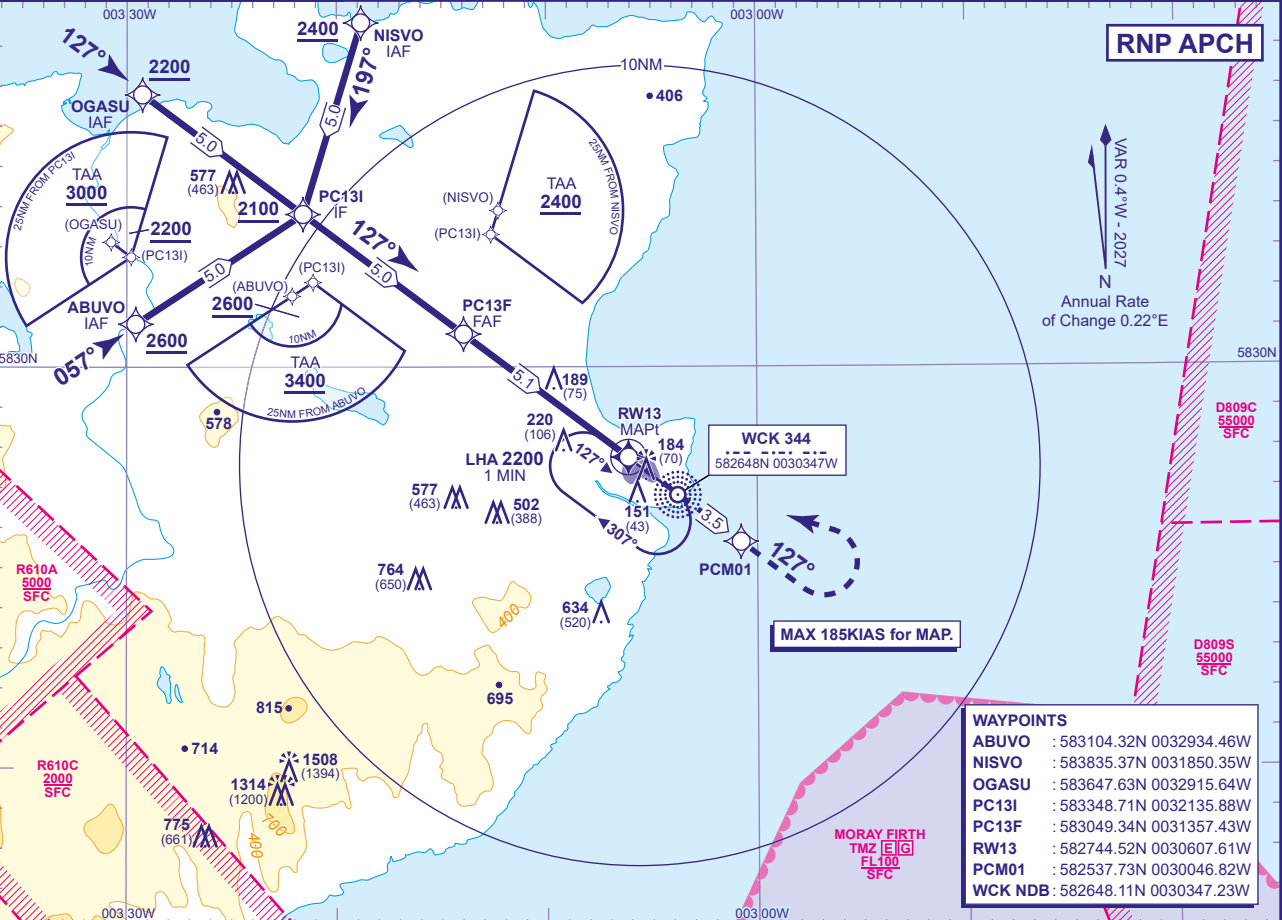
AD ELEVATION 126

THR ELEVATION 114

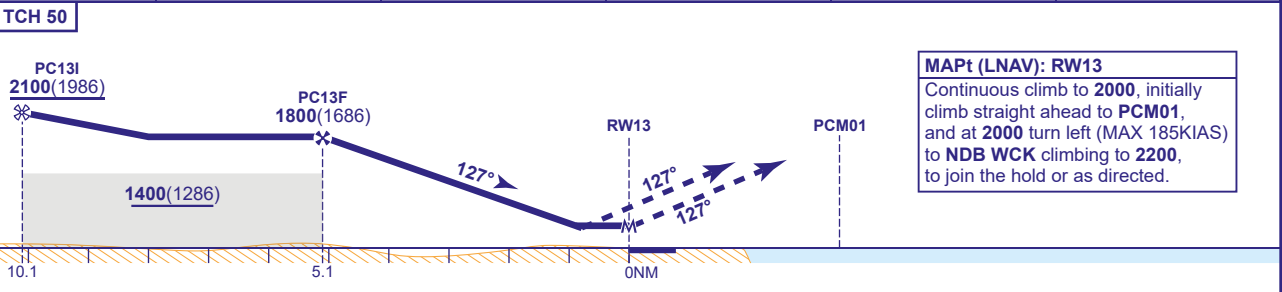
OBSTACLE ELEVATION 1508 AMSL (1394) (ABOVE THR)

BEARINGS ARE MAGNETIC

TRANSITION ALTITUDE 3000



RECOMMENDED PROFILE Gradient 5.24%, 320FT/NM					
NM to RW13	5	4	3	2	1
ALT(HGT)	1760(1646)	1440(1326)	1120(1006)	800(686)	480(366)



Aircraft Category		A	B	C	Rate of descent	G/S KT	160	140	120	100	80
OCA (OCH)	LNAV	480(366)	480(366)	480(366)		FT/MIN	850	740	640	530	430
VM(C)OCA (OCH AAL)	Total Area	630(504)	630(504)	1090(964)							
	North of RWY 13/31	530(404)	620(494)	720(594)							

NOTES 1 Use of RNP procedure is strictly PPR from the aerodrome operator.  
2 Missed approach reverts to conventional navigation at PCM01.